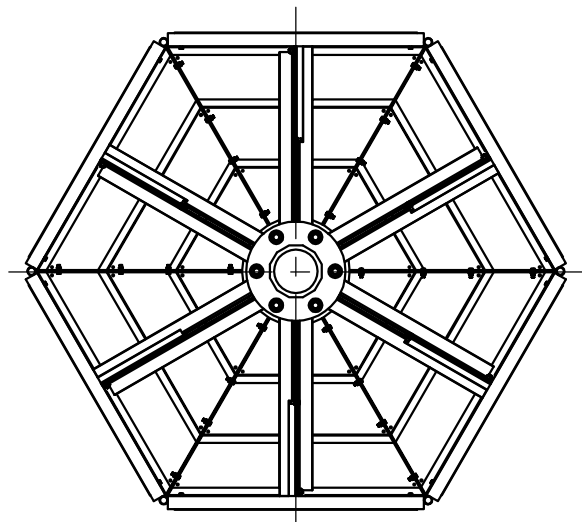
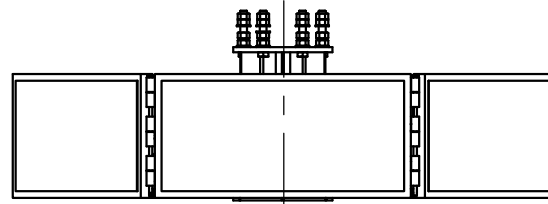
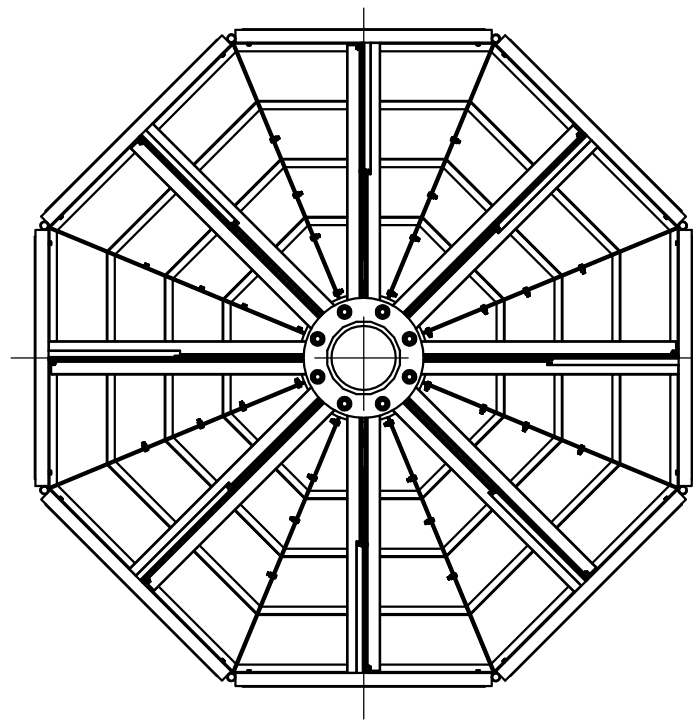
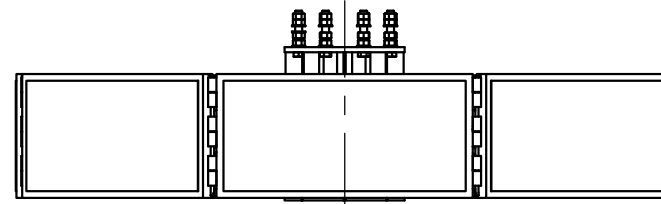


QB6



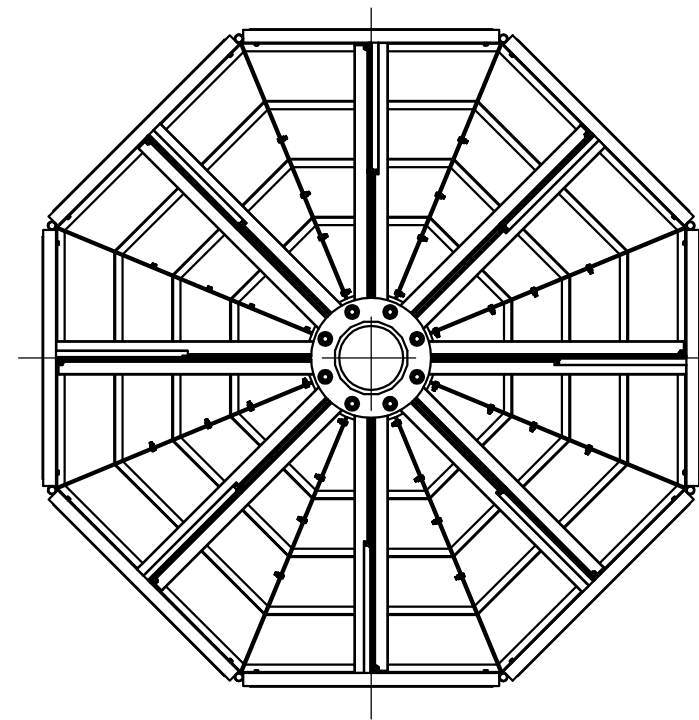
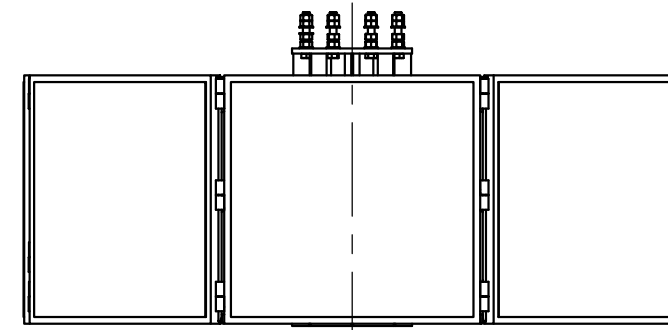
6 Sides
 Height: 1200mm / 47.24in
 Width: 2300mm / 90.55in
 Base Moment (KN.m): 100
 Estimated Weight: 1000Kg

QB8A



8 Sides
 Height: 600mm / 23.62in
 Width: 3172mm / 124.88in
 Base Moment (KN.m): 150
 Estimated Weight: 1200Kg

QB8B



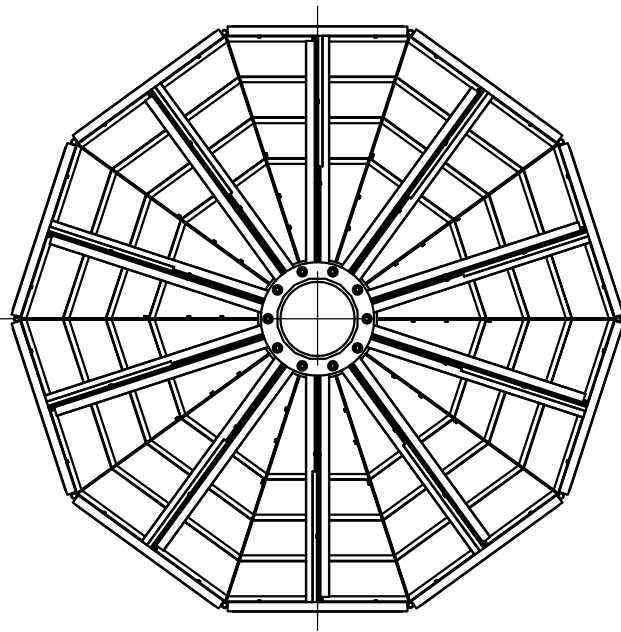
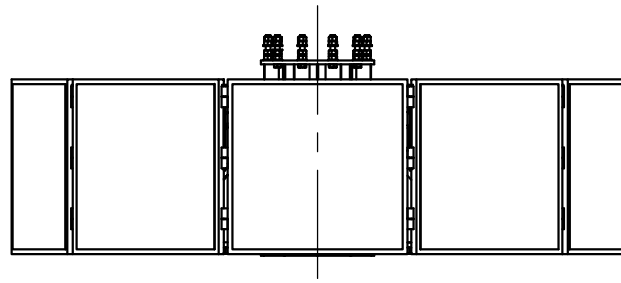
8 Sides
 Height: 1200mm / 47.24in
 Width: 3172mm / 124.88in
 Base Moment (KN.m): 280
 Estimated Weight: 1800Kg

AMBOR Ambor Structures
 amborstructures.com

CLIENT
 TITLE

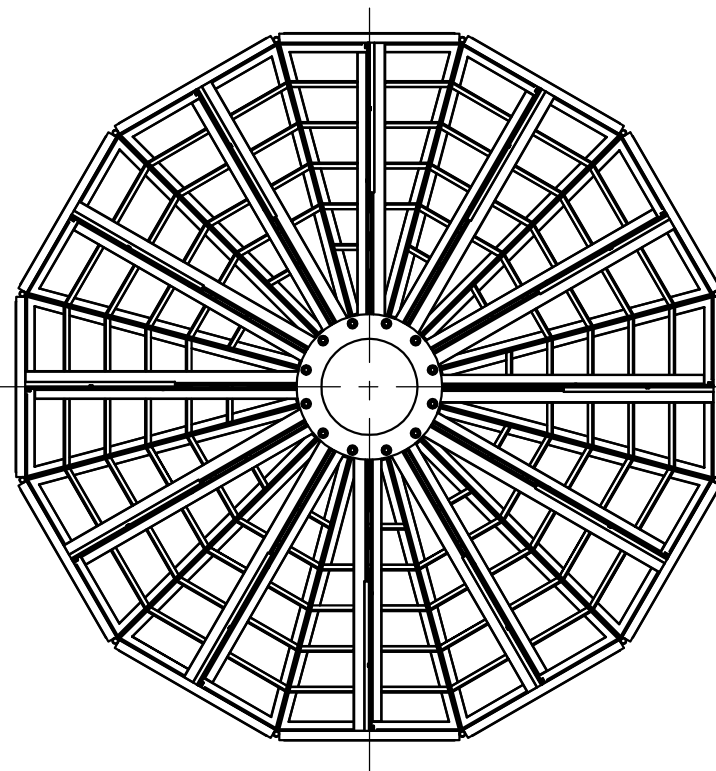
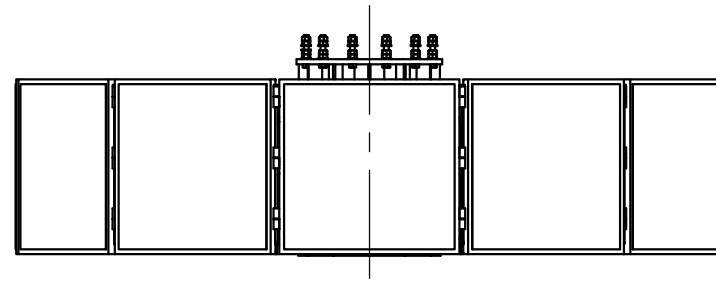
			DRAWN		MATERIAL		MANUFACTURING ORDER
			ENGR		THK (mm)		
A			CHECKED		WT (kg)		
REV ID	DATE	REVISION DESCRIPTION	SPECIFICATIONS		SCALE		P/N

QB10



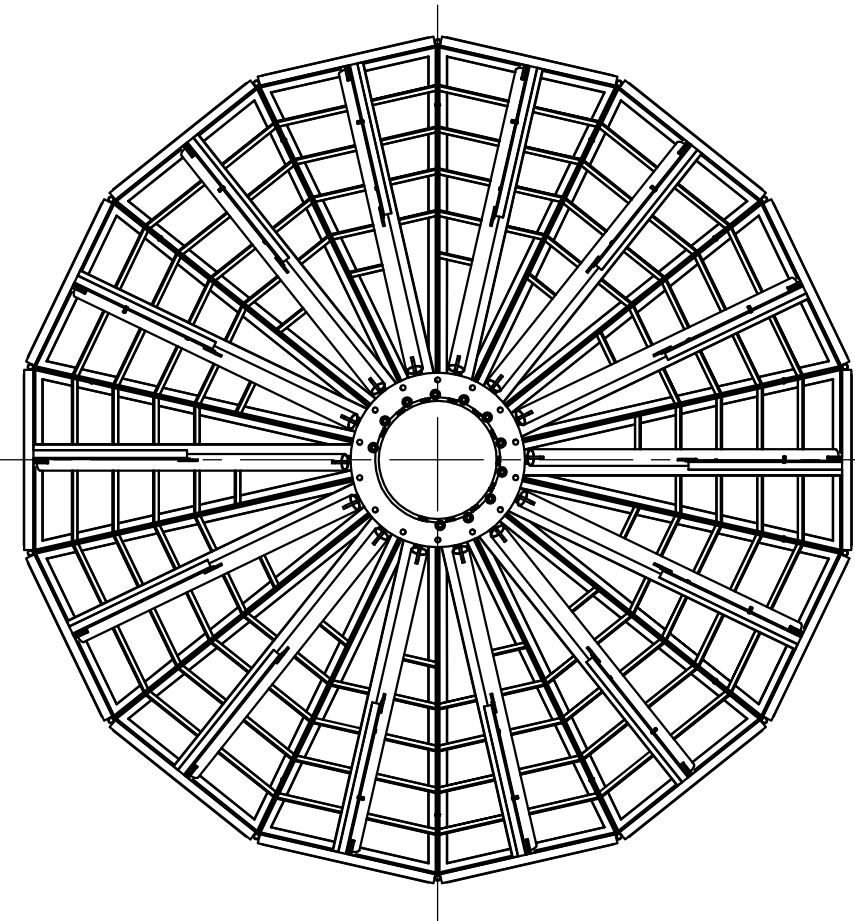
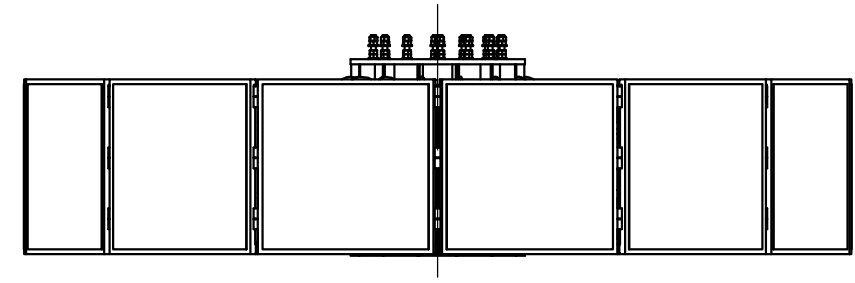
10 Sides
 Height: 1200mm / 47.24in
 Width: 4020mm / 158.27in
 Base Moment (KN.m): 600
 Estimated Weight: 2500Kg

QB12



12 Sides
 Height: 1200mm / 47.24in
 Width: 4857mm / 191.22in
 Base Moment (KN.m): 1000
 Estimated Weight: 4000Kg

QB14



14 Sides
 Height: 1200mm / 47.24in
 Width: 5686mm / 223.86in
 Base Moment (KN.m): 1700
 Estimated Weight: 5000Kg

AMBOR Ambor Structures
 amborstructures.com

CLIENT
 TITLE

			DRAWN		MATERIAL		MANUFACTURING ORDER
			ENGR		THK (mm)		
A			CHECKED		WT (kg)		
REV ID	DATE	REVISION DESCRIPTION	SPECIFICATIONS		SCALE		P/N